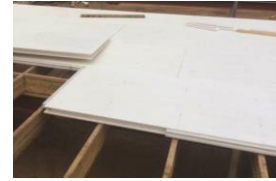


The predominant feature of the **SUB-FLOOR** is the **insulative properties** of the product which is also **impact resistant, with low noise transfer**

ENCLOSED or UNENCLOSED
SAVE MONEY ON ELECTRICITY BILLS
SAVE MONEY ON CONSTRUCTION COSTS

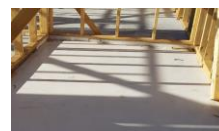


Conventional concrete slabs have high embodied energy, which means high energy consumed by all of the processes associated with the production of a building, from the mining and processing of natural resources to manufacturing, transport and product delivery. Additionally concrete slab flooring has significant winter heat loss to the earth. AAC is manufactured using an autoclave for full curing under heat and pressure. **XL-Floor has lower energy embodiment and is a great cost effective flooring substrate alternative that provides much greater insulation and thereby reduces energy costs to heat and cool your home.** When building on undulating ground, cutting out a block can add tens of thousands of dollars to the construction cost. **XL-Floor with a pier type footing system is an ideal solution.**

LIGHT WEIGHT BUT ALMOST AS SOLID AS CONCRETE SLAB
PANELS CAN BE JOINED OFF-JOIST
LARGE FORMAT PANELS 2400 X 1100 FOR FASTER INSTALLATION
SMOOTH FLAT BOARD READY FOR FLOOR COVERINGS
PERFECT FOR UPPER FLOOR FLOORING
INSULATED FLOOR WHEN BUILDING ON PIERS WITH SLOPED LAND

FEATURES

- Manufactured in South Australia
- 75mm thick insulated panels with high performance MEGABOARD™ skins
- MEGABOARD™ skin is Non-Combustible AS1530.1
- XL-Floor is Certified BAL Low to BAL 29
- Excellent thermal resistance R2.4 (summer) - R2.6 (winter)
- Excellent acoustic properties to reduce noise transfer
- Water, Mould resistant
- Impact resistant
- Highly durable
- Light weight, compared to alternatives
- Non-toxic: it does not contain any asbestos, organic solvents, formaldehyde, oils or other toxic substances
- All materials are recyclable
- High structural strength
- Joining system allows the panels to be joined offjoist
- Eco friendly green building product
- Low energy manufacturing process
- Non-corrosive on metal & steel structures and fixings
- Can be built using standard carpentry tools
- All third-party components have been tested with the product
- Tested in Australia by approved NATA laboratories
- Large format panels , 2400 X 1100 mm. Other sizes require special order.
- Weight 26 kgs /m2




So if you are interested in a thermally efficient house, that keeps your home cooler in summer and warmer in winter saving thousands of dollars on power costs, is quicker to install and easier for the builder..... XL-Floor™ is a great solution.



When Price and Performance counts

SUBFLOOR MATERIALS COMPARISONS

Product	 XL-FLOOR <small>The Thermal Floor For Your Home</small>	Hebel PowerFloor
Performance features		
Thermal performance, R-Value, enclosed subfloor	R2.6 (winter)	R0.6
Thermal performance, R-Value, unenclosed subfloor	R1.9 (winter)	not specified
Lighter weight / m2	✓	✗
High Impact Resistant	✓	✗
Highly durable	✓	✓
Moisture resistant	✓	✗
Termite and mould resistant	✓	✓
Surface is very smooth	✓	✗
Panels are very flat	✓	✗
Non Toxic	✓	✓
Acoustic insulation	✓	✓
BAL LOW to BAL 29	✓	✓
Specifications		
Length mm, nominal	2400	1800
Width mm, nominal	1100	600
Thickness mm, nominal	75	75
Sizes m2	2.64	1.08
Weight kgs / m2, nominal	23	52
Joints	ShipLap	T&G
Warranty, years	10	7
Uses		
Internal subfloor	✓	✓
External subfloor	✓	✓
Suspended ground floors or mid-floors	✓	✓
Wet areas	✓	✓
Installation features		
Joined Off Joist	✓	✗
Deflection limit of span, centres, mm	600	600
Install speed	fast	slower
Waterproof membrane	not required	required
Plywood sheeting	not required	as required
Tools	Carpentry	Masonry
Predrill	not required	required
Screw fixings to Timber or Steel joists	✓	✓
Anti Rust treatment	not required	required
Floor finishes		
Tiles	✓	✓
Carpet	✓	✓
Timber	✓	✓
Just about any floor finish	✓	✓
Technical		
Acoustic performance	✓	✓
Environmentally friendly	✓	✗
Environmental Impact	Very Low	Higher
Manufacture	Cured at ambient temperature	Autoclaved Aerated Concrete
Embodied energy to manufacture	Very Low	Higher
Greenhouse emissions	Very Low	Higher
Recyclable Content	✓	✗

Information presented to the best of our knowledge is true and accurate, using manufacturers' specification sheets, as at 28/2/2020.

Refer to manufactures' own data and specification sheets

* up to 40/FZ refer James Hardie Technical Supplement

Performance of XL-Floor is achieved when installed as per the installation manual